

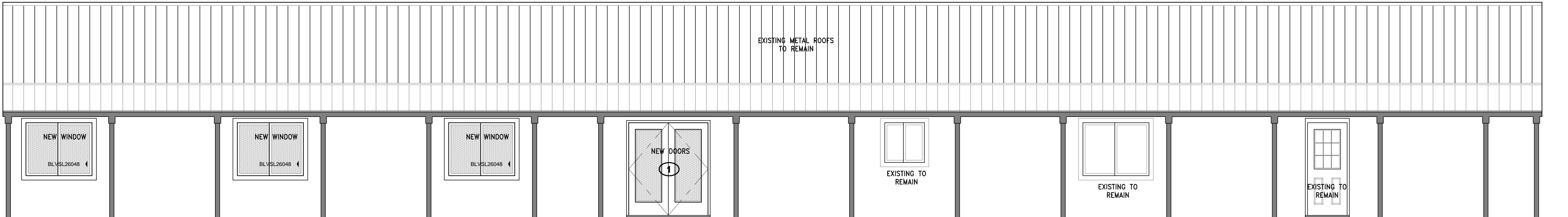
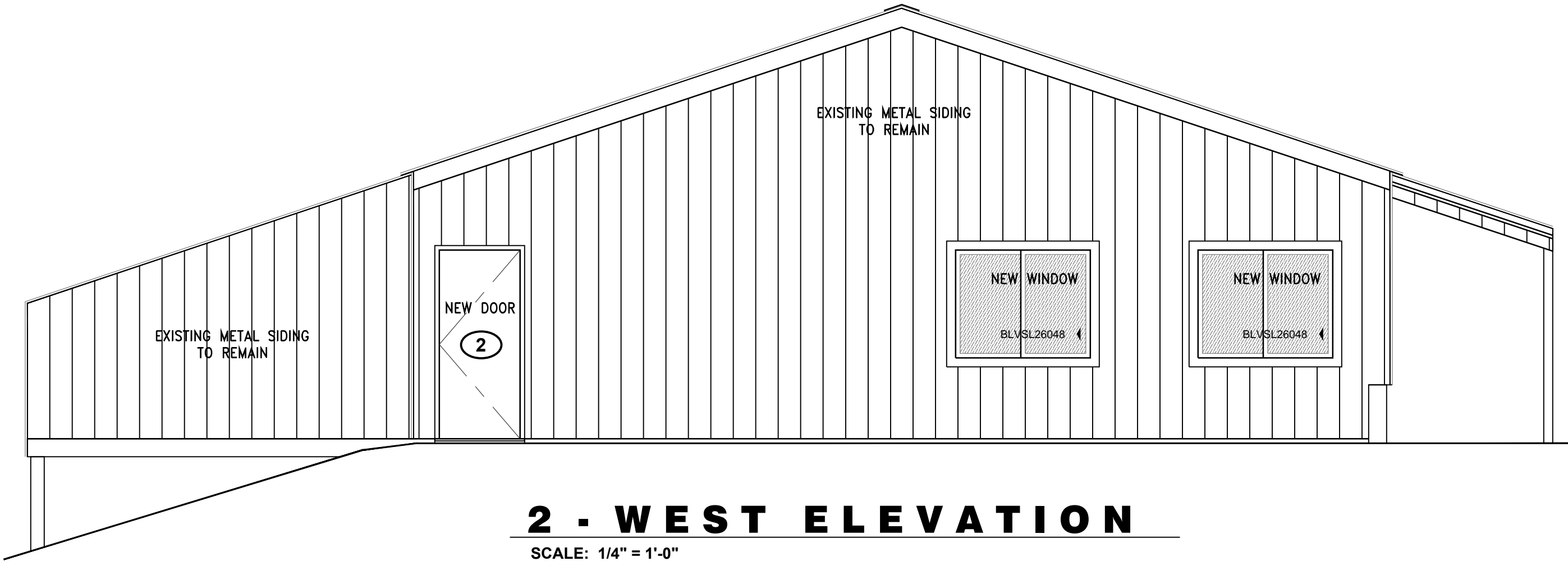


Kickapoo Orchard West

52132 WI Hwy 171

Gays Mills, WI

SPRINKLER SYSTEM NOT REQUIRED. NO ACCESS TO A MUNICIPAL WATER SUPPLY.



1 - SOUTH ELEVATION
SCALE: 1/4" = 1'-0"

DRAWING SCHEDULE		
ARCHITECTURAL	MECHANICAL - HVAC	
A-1 EXTERIOR ELEVATIONS & AERIAL PLAN	M-1 FLOOR PLAN & SCHEDULES	
A-2 FLOOR PLAN		
A-3 CROSS SECTION		
A-4 ADA TOILET ELEVATIONS		

GENERAL NOTES

THIS PROJECT

IS THE CHANGE OF OCCUPANCY OF AN EXISTING RETAIL MARKET MERCANTILE - M TO A COMBINED MARKET & BAR ASSEMBLY, A-2.

- THE CONTRACTOR SHALL COORDINATE ALL WORK TO MINIMIZE INCONVENIENCE, DUST AND DIRT.
- THE CONTRACTOR SHALL SUPERVISE AND DIRECT ALL WORK, USING HIS BEST SKILL AND ATTENTION. HE SHALL BE SOLELY RESPONSIBLE FOR ALL CONSTRUCTION MEANS, METHODS, TECHNIQUES, PROCEDURES AND SEQUENCES FOR COORDINATING ALL PORTIONS OF THE WORK UNDER THE CONTRACT.
- THE CONTRACTOR SHALL VISIT THE JOB SITE TO REVIEW THE SCOPE OF WORK AND EXISTING JOB SITE CONDITIONS INCLUDING, BUT NOT LIMITED TO ARCHITECTURAL, MECHANICAL AND ELECTRICAL AND OVERALL COORDINATION.
- THE CONTRACTOR SHALL VERIFY ALL EXISTING SITE CONDITIONS AND DIMENSIONS PRIOR TO SUBMITTING HIS BID. ANY DISCREPANCIES, CONFLICTS OR OMISSIONS, ETC. SHALL BE REPORTED TO OWNERS REPRESENTATIVE BEFORE PROCEEDING WITH THE WORK.
- THE CONTRACTOR SHALL PROTECT ALL AREAS FROM DAMAGE WHICH MAY OCCUR DURING CONSTRUCTION. ANY DAMAGE TO NEW AND EXISTING CONSTRUCTION, STRUCTURE, OR EQUIPMENT SHALL BE IMMEDIATELY REPAIRED OR REPLACED TO THE SATISFACTION OF THE TENANT OR BUILDING OWNER, OR OWNER'S REPRESENTATIVE, AT THE EXPENSE OF THE CONTRACTOR.
- THE CONTRACTOR SHALL BE RESPONSIBLE FOR, AND SHALL REPLACE OR REMEDY ANY FAULTY, IMPROPER, OR INFERIOR MATERIALS OR WORKMANSHIP OR ANY

DAMAGE WHICH SHALL APPEAR WITHIN ONE YEAR AFTER THE COMPLETION AND ACCEPTANCE OF THE WORK UNDER THIS CONTRACT.

- THE CONTRACTOR SHALL REMOVE ALL RUBBISH AND WASTE MATERIALS ON A REGULAR BASIS, AND SHALL EXERCISE STRICT CONTROL OVER JOB CLEANING THROUGHOUT CONSTRUCTION, INCLUDING FINAL CLEANUP UPON COMPLETION OF WORK. ALL AREAS ARE TO BE LEFT IN A BROOM CLEAN FINISH AT THE END OF EACH DAY.
- THE CONTRACTOR SHALL SAFEGUARD THE OWNER'S PROPERTY DURING CONSTRUCTION AND SHALL REPLACE ANY DAMAGED PROPERTY TO ORIGINAL OR BETTER.
- IT SHALL BE THE RESPONSIBILITY OF THE CONTRACTOR TO LOCATE ALL EXISTING UTILITIES, WHETHER SHOWN HEREON OR NOT, AND TO PROTECT THEM FROM DAMAGE. THE CONTRACTOR SHALL BEAR ALL EXPENSES FOR REPAIR OR REPLACEMENT OF UTILITIES OR OTHER PROPERTY DAMAGED IN CONJUNCTION WITH THE EXECUTION OF WORK.
- THE CONTRACTOR SHALL BE RESPONSIBLE FOR THE COMPLETE SECURITY OF THE SITE WHILE THE JOB IS IN PROGRESS AND UNTIL THE JOB IS COMPLETED.
- ALL CONSTRUCTION WORK SHALL CONFORM TO ALL GOVERNING CODES. THE MOST RESTRICTIVE CODES WILL GOVERN.
- THE CONTRACTOR SHALL COMPLY WITH ALL LOCAL CODE REGULATIONS AND STATE DEPT. OF INDUSTRIAL REGULATIONS & DIVISION OF INDUSTRIAL SAFETY (OSHA) REQUIREMENTS.
- THE CONTRACTOR SHALL OBTAIN AND PAY FOR PERMITS, LICENSES AND INSPECTIONS NECESSARY FOR PERFORMANCE OF THE WORK AND PASS THE COST OF THE WORK TO THE OWNER.

- FIGURED DIMENSIONS HAVE PRECEDENCE OVER DRAWING SCALE. AND DETAIL DRAWINGS HAVE PRECEDENCE OVER SMALL SCALE DRAWINGS. CHECK ACCURACY OF ALL DIMENSIONS IN THE FIELD. UNLESS SPECIFICALLY NOTED, DO NOT FABRICATE ANY MATERIALS OFF-SITE, OR DO ANY CONSTRUCTION UNTIL THE ACCURACY OF DRAWING DIMENSIONS HAS BEEN VERIFIED AGAINST ACTUAL FIELD DIMENSIONS.
- CONTRACTOR SHALL NOTIFY OWNER OF ANY CONFLICTS OR DISCREPANCIES BETWEEN THE CONTRACT DOCUMENTS AND THE FIELD CONDITIONS PRIOR TO EXECUTING THE WORK IN QUESTION.
- THE CONTRACTOR SHALL PROVIDE ALL NECESSARY BLOCKING, BACKING, FRAMING, HANGERS OR OTHER SUPPORT FOR ALL OTHER ITEMS REQUIRING THE SAME.
- CONTRACTOR SHALL NOTIFY THE ARCHITECT IF DETAILS ARE CONSIDERED UNSUITABLE, OR NOT WITHIN CUSTOMARY TRADE PRACTICE. IF WORK IS PERFORMED, IT WILL BE ASSUMED THAT THERE IS NO OBJECTION TO THE DETAIL. DETAILS ARE INTENDED TO SHOW THE END RESULT OF THE DESIGN. MINOR MODIFICATIONS MAY BE REQUIRED TO SUIT JOB CONDITIONS, AND SHALL BE INCLUDED AS PART OF THE WORK.
- EXISTING SITE CONDITIONS SHALL BE VERIFIED BY THE CONTRACTOR BEFORE CONSTRUCTION. IF THEY DIFFER FROM THOSE SHOWN ON THE PLANS, THE CONTRACTOR SHALL NOTIFY THE ARCHITECT SO THAT MODIFICATIONS CAN BE MADE BEFORE PROCEEDING WITH THE WORK.
- ALL SYMBOLS AND ABBREVIATIONS USED ON THE DRAWINGS ARE CONSIDERED CONSTRUCTION STANDARDS. IF THE CONTRACTOR HAS QUESTIONS REGARDING THEIR EXACT MEANING, THE ARCHITECT SHALL BE NOTIFIED BEFORE PROCEEDING WITH THE WORK.



4 - SOUTH ELEVATION
SCALE: NONE

yowza
Architects

VIROQUA, WISCONSIN 54665

(608) 606-3288



Sept 2, 2025

Gregory F. Splinter

GENERAL ARCHITECTURAL NOTES:

- LUMBER PROVIDER TO SUBMIT ALL STRUCTURAL ENGINEERING AND SIZING OF NEW MEMBERS AND CONNECTIONS TO ARCHITECT FOR APPROVAL PRIOR TO FABRICATION.
- GENERAL CONTRACTOR TO SUBMIT TECHNICAL DATA SHEETS, SHOP DRAWINGS, AND SAMPLES TO OWNER/ARCHITECT FOR APPROVAL PRIOR TO PURCHASE OF ALL BUILDING PRODUCTS AND MATERIALS.
- ALL WORK PERFORMED SHALL CONFORM WITH ALL LOCAL, CITY AND STATE REGULATIONS. ALL WORK SHALL BE CONDUCTED, WHETHER REMOVED OR INSTALLED, AND COMPLETED IN A WORKMANLIKE AND APPROVED MANNER SO AS TO SECURE THE RESULTS INTENDED BY THESE DOCUMENTS.
- REMOVE ALL DEBRIS FROM JOB SITE PREMISES ON A DAILY BASIS.

FIRE SAFETY:



- The occupant load shall be displayed in accordance with IBC section 1004.3.
- All open flames, including smoking, shall be prohibited in the building and within 50 feet or less from the building, except for flame equipment used to reheat or maintain food temperatures.
- A smoke detection and fire alarm system shall be installed in accordance with IBC section 907.
- Portable fire extinguishers shall be installed in accordance with IBC section 906.
- A municipal fire and building inspection position statement shall be submitted to the department on an approved form indicating the municipality's review and approval of the proposed building design. The position statement shall be completed by the fire code official if there is no commercial building inspector for the jurisdiction.

- HARDWIRED - COMBINATION SMOKE DETECTOR AND CARBON MONOXIDE DETECTOR.

ALL THE ALARMS HAVE TO BE HARDWIRED WITH BATTERY BACKUP AND INTERCONNECTED SO THAT IF ONE GOES OFF THEY ALL GO OFF.

D	SEPT 2, 2025	DSPS REQUEST FOR INFO
C	AUG 25, 2025	DSPS REQUEST FOR INFO
B	JULY 14, 2025	FOR BUILDING PERMIT
A	JULY 7, 2025	CLIENT REVIEW & MECHANICAL REVIEW
NO.	DATE	DESCRIPTION

Kickapoo Orchard West

52132 WI Hwy 171
Gays Mills, Wisconsin
Utica Township

NOEL MILLER, OWNER

ELEVATIONS and AERIAL PLAN

36" x 24" IS THE ORIGINAL SIZE OF THIS SHEET

DRAWN BY: G.S.

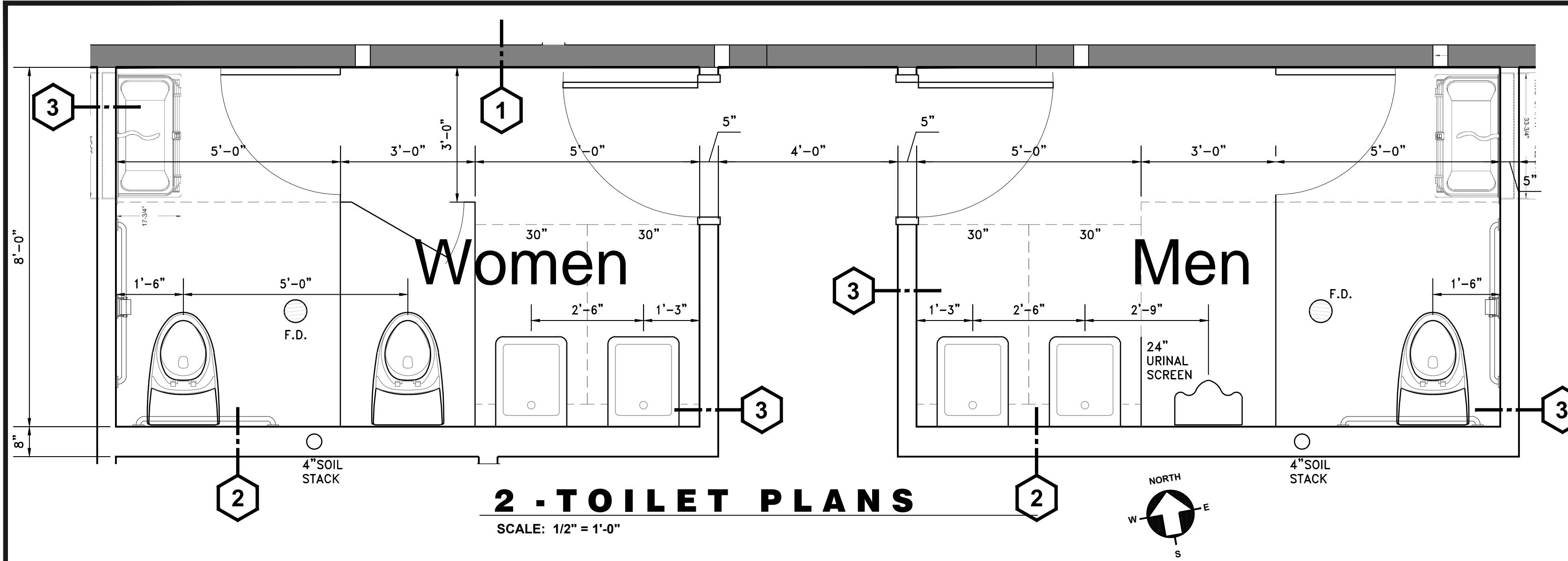
CHECKED BY: G.S.

APPROVED BY: G.S.

DATE: SEPT 2, 2025

A-1

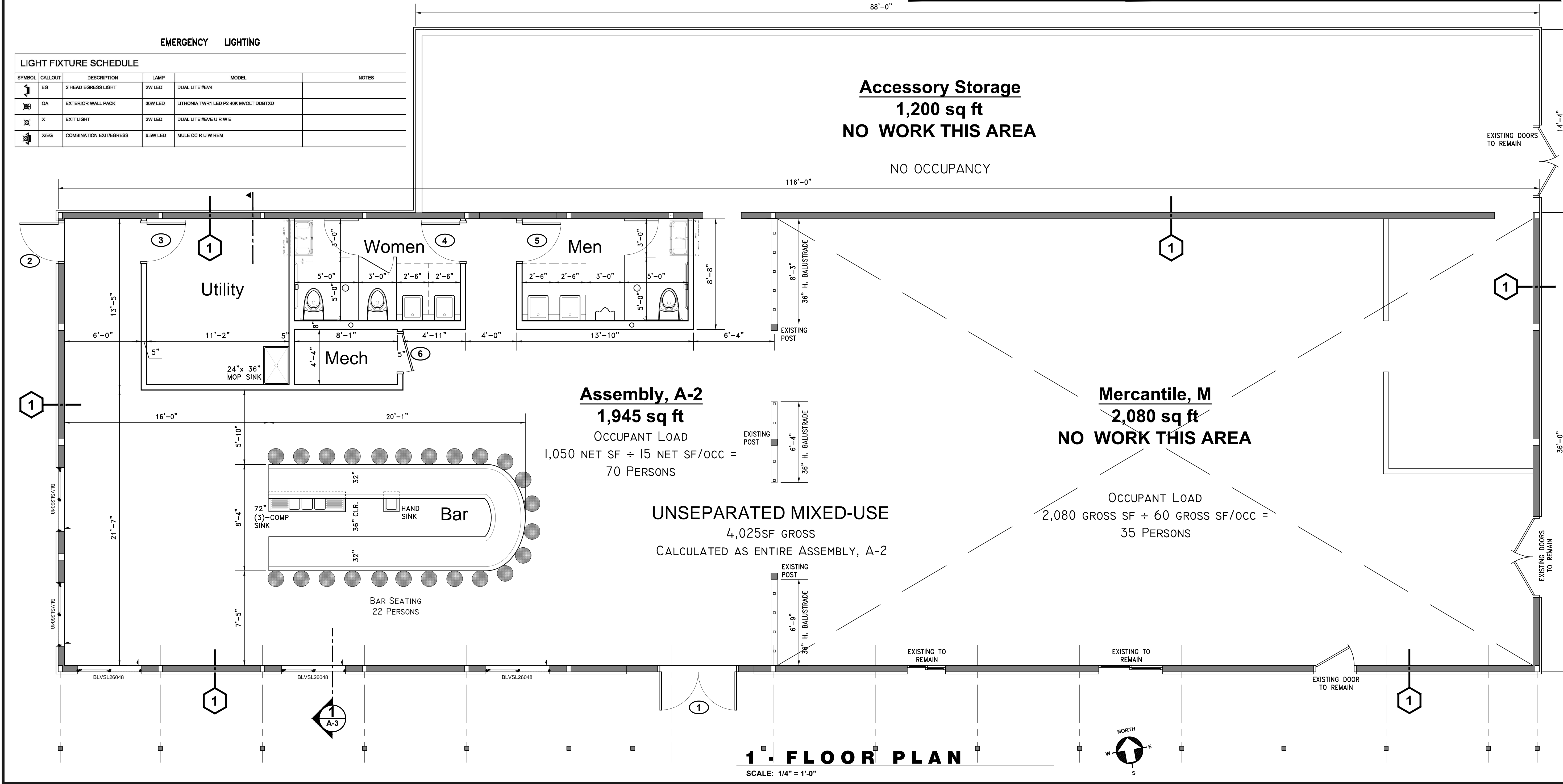
SHEET 1 OF 4







<div>WALL TYPE</div> <div>1</div>	<div>WALL TYPE</div> <div>2</div>	<div>WALL TYPE</div> <div>3</div>
<div>EXISTING EXTERIOR WALL — NON-RATED BEARING:</div> <div>North & South</div> <div>NON-LOAD BEARING: East & West</div> <div><div><div>• 2 x 6 WOOD STUDS (EXISTING) @ 16" O.C.</div><div>w/ SINGLE BOTTOM & & DBL TOP</div><div>• EXTERIOR METAL WALL PANELS TO REMAIN</div><div>• SINGLE LAYER 3/8" DRYWALL (IF RECOMMENDED BY OWNER)</div><div>• PRIME THEN (2)-COATS PAINT</div></div></div>	<div>PLUMBING WALL — NON-RATED NON-LOAD BEARING</div> <div><div><div>• 2 x 8 WOOD STUDS @ 16" O.C.</div><div>w/ SINGLE BOTTOM & & DBL TOP</div><div>• 1/2" PURPLEBOARD — BATHROOM SIDE</div><div>• 3/8" GYPSUM DRYWALL — NON-BATHROOM SIDE</div><div>• PRIME THEN (2)-COATS PAINT, TILE ON PURPLEBOARD WHERE RECOMMENDED BY OWNER.</div></div></div>	<div>INTERIOR PARTITION — NON-RATED NON-LOAD BEARING</div> <div><div><div>• 2 x 4 WOOD STUDS @ 16" O.C.</div><div>w/ SINGLE BOTTOM & & DBL TOP</div><div>• 3/8" GYPSUM DRYWALL — (1) LAYER EACH SIDE</div><div>• SUBSTITUTE 1/2" PURPLEBOARD IN BATHROOM</div><div>• PRIME THEN (2)-COATS PAINT, TILE ON PURPLEBOARD WHERE RECOMMENDED BY OWNER.</div></div></div>

<div>OCCUPANT LOAD</div>	<div>PLUMBING FIXTURES REQUIRED</div>	<div>1. F = FLUSH</div> <div>2. FG = FULL GLASS</div> <div>3. N.R. = NON-RATED</div> <div>DOOR SCHEDULE</div>														
<div>Assembly, A-2</div> <div>1,050 net sf</div> <div>± 15 net sf/occ</div> <div>= 70 occ</div> <div>Mercantile, M</div> <div>2,080 gross sf</div> <div>± 60 gross sf/occ</div> <div>= 35 occ</div>	<div>Assembly, A-2</div> <div>70 occupancy</div> <div>35 Men + 35 Women</div> <div>± 1 per 40 occ</div> <div>= 1 TOILET, 1 LAV Men</div> <div>1 TOILET, 1 LAV Women</div> <div>Mercantile, M</div> <div>35 occupancy</div> <div>18 Men + 18 Women</div> <div>± 1 per 500 occ</div> <div>= 1 TOILET, 1 LAV</div> <div>combined for Men & Women</div>	DOOR NO	ROOM	DOOR							FRAME				REMARKS	
				SIZE	TYPE	UL	MATERIAL	FINISH	BY MFR.	BY ANALYST	HARDWARE	WOOD	METAL	STAIN		PAINT
		1	FRONT ENTRY	PR. 3'-0"x 7'-0"	FG	N.R.	•						•	PANIC	•	
		2	REAR EXIT	3'-0"x 7'-0"	F	N.R.	•			•	PANIC	•		•	INSULATED	
		3	UTILITY	3'-0"x 7'-0"	F	N.R.	•			•	F84	•			HOLLOW METAL	
		4	W/M TOILET	3'-0"x 6'-8"	PANEL	N.R.	•				•	F76	•		•	WITH CLOSER
		5	W/M TOILET	3'-0"x 6'-8"	PANEL	N.R.	•				•	F76	•		•	WITH CLOSER
		6	MECHANICAL	3'-0"x 7'-0"	F	N.R.	•				•	F84	•		•	HOLLOW METAL

PLUMBING FIXTURES — ACTUAL		
MEN	1 TOILET, 1 URINAL, 2 LAVS	
WOMEN	2 TOILETS, 2 LAVS	



EMERGENCY LIGHTING

LIGHT FIXTURE SCHEDULE					
SYMBOL	CALLOUT	DESCRIPTION	LAMP	MODEL	NOTES
	EG	2 HEAD EGRESS LIGHT	2W LED	DUAL LITE REV4	
	OA	EXTERIOR WALL PACK	30W LED	LITHONIA TWRT1 LED P2 40K MVOLT DDBTXXD	
	X	EXIT LIGHT	2W LED	DUAL LITE REV6 U R W E	
	X/EG	COMBINATION EXIT/EGRESS	8.5W LED	MULE CC R U W REM	

Accessory Storage 1,200 sq ft NO WORK THIS AREA NO OCCUPANCY	Assembly, A-2 1,945 sq ft OCCUPANT LOAD 1,050 NET SF ÷ 15 NET SF/OCC = 70 PERSONS	Mercantile, M 2,080 sq ft NO WORK THIS AREA OCCUPANT LOAD 2,080 GROSS SF ÷ 60 GROSS SF/OCC = 35 PERSONS
UNSEPARATED MIXED-USE 4,025SF GROSS CALCULATED AS ENTIRE ASSEMBLY, A-2		

yowza
Architects

VIROQUA, WISCONSIN 54665

(608) 606-3288

GREGORY F.
SPLINTER
A-4067-006
VIROQUA
WISCONSIN

Sept 2, 2025

GENERAL ARCHITECTURAL NOTES:
1. LUMBER PROVIDER TO SUBMIT ALL STRUCTURAL ENGINEERING AND SIZING OF NEW MEMBERS AND CONNECTIONS TO ARCHITECT FOR APPROVAL PRIOR TO FABRICATION.
2. GENERAL CONTRACTOR TO SUBMIT TECHNICAL DATA SHEETS, SHOP DRAWINGS, AND SAMPLES TO OWNER/ARCHITECT FOR APPROVAL PRIOR TO PURCHASE OF ALL BUILDING PRODUCTS AND MATERIALS.
3. ALL WORK PERFORMED SHALL CONFORM WITH ALL LOCAL, CITY AND STATE REGULATIONS. ALL WORK SHALL BE CONDUCTED, WHETHER REMOVED OR INSTALLED, AND COMPLETED IN A WORKMANLIKE AND APPROVED MANNER SO AS TO SECURE THE RESULTS INTENDED BY THESE DOCUMENTS.
4. REMOVE ALL DEBRIS FROM JOB SITE PREMISES ON A DAILY BASIS.

FIRE SAFETY:

SD
CO

1. The occupant load shall be displayed in accordance with IBC section 1004.3.
2. All open flames, including smoking, shall be prohibited in the building and within 50 feet or less from the building, except for flame equipment used to reheat or maintain food temperatures.
3. A smoke detection and fire alarm system shall be installed in accordance with IBC section 907.
4. Portable fire extinguishers shall be installed in accordance with IBC section 906.
5. A municipal fire and building inspection position statement shall be submitted to the department on an approved form indicating the municipality's review and approval of the proposed building design. The position statement shall be completed by the fire code official if there is no commercial building inspector for the jurisdiction.

• HARDWIRED -- COMBINATION SMOKE DETECTOR AND CARBON MONOXIDE DETECTOR.
ALL THE ALARMS HAVE TO BE HARDWIRED WITH BATTERY BACKUP AND INTERCONNECTED SO THAT IF ONE GOES OFF THEY ALL GO OFF.

D	SEPT 2, 2025	DSPS REQUEST FOR INFO
C	AUG 25, 2025	DSPS REQUEST FOR INFO
B	JULY 14, 2025	FOR BUILDING PERMIT
A	JULY 7, 2025	CLIENT REVIEW & MECHANICAL REVIEW
NO.	DATE	DESCRIPTION

Kickapoo Orchard West
52132 WI Hwy 171
Gays Mills, Wisconsin
Utica Township
NOEL MILLER, OWNER

FLOOR PLAN
36" x 24" IS THE ORIGINAL SIZE OF THIS SHEET
DRAWN BY: G.S.
CHECKED BY: G.S.
APPROVED BY: G.S.
DATE: SEPT 2, 2025

A-2
SHEET 2 OF 4

WALL TYPE 1	WALL TYPE 2	WALL TYPE 3
EXISTING EXTERIOR WALL - NON-RATED BEARING: North & South NON-LOAD BEARING: East & West • 2 x 6 WOOD STUDS (EXISTING) @ 16" O.C. w/ SINGLE BOTTOM R & DBL TOP R • EXTERIOR METAL WALL PANELS TO REMAIN • SINGLE LAYER 5/8" DRYWALL (IF RECOMMENDED BY OWNER) • PRIME THEN (2)-COATS PAINT	PLUMBING WALL - NON-RATED NON-LOAD BEARING • 2 x 8 WOOD STUDS @ 16" O.C. w/ SINGLE BOTTOM R & DBL TOP R • 1/2" PURPLEBOARD - BATHROOM SIDE • 5/8" GYPSUM DRYWALL - NON-BATHROOM SIDE • PRIME THEN (2)-COATS PAINT. TILE ON PURPLEBOARD WHERE RECOMMENDED BY OWNER.	INTERIOR PARTITION - NON-RATED NON-LOAD BEARING • 2 x 4 WOOD STUDS @ 16" O.C. w/ SINGLE BOTTOM R & DBL TOP R • 5/8" GYPSUM DRYWALL - (1) LAYER EACH SIDE • SUBSTITUTE 1/2" PURPLEBOARD IN BATHROOM • PRIME THEN (2)-COATS PAINT. TILE ON PURPLEBOARD WHERE RECOMMENDED BY OWNER.

yowza
Architects

VIROQUA, WISCONSIN 54665

(608) 606-3288

WISCONSIN

GREGORY F. SPLINTER

A-4367-006

VIROQUA

WISCONSIN

ARCHITECT

Sept 2, 2025

GENERAL ARCHITECTURAL NOTES:

1. LUMBER PROVIDER TO SUBMIT ALL STRUCTURAL ENGINEERING AND SIZING OF NEW MEMBERS AND CONNECTIONS TO ARCHITECT FOR APPROVAL PRIOR TO FABRICATION.

2. GENERAL CONTRACTOR TO SUBMIT TECHNICAL DATA SHEETS, SHOP DRAWINGS, AND SAMPLES TO OWNER/ARCHITECT FOR APPROVAL PRIOR TO PURCHASE OF ALL BUILDING PRODUCTS AND MATERIALS.

3. ALL WORK PERFORMED SHALL CONFORM WITH ALL LOCAL, CITY AND STATE REGULATIONS. ALL WORK SHALL BE CONDUCTED, WHETHER REMOVED OR INSTALLED, AND COMPLETED IN A WORKMANLIKE AND APPROVED MANNER SO AS TO SECURE THE RESULTS INTENDED BY THESE DOCUMENTS.

4. REMOVE ALL DEBRIS FROM JOB SITE PREMISES ON A DAILY BASIS.

FIRE SAFETY:

1. The occupant load shall be displayed in accordance with IBC section 1004.3.

2. All open flames, including smoking, shall be prohibited in the building and within 50 feet or less from the building, except for flame equipment used to reheat or maintain food temperatures.

3. A smoke detection and fire alarm system shall be installed in accordance with IBC section 907.

4. Portable fire extinguishers shall be installed in accordance with IBC section 906.

5. A municipal fire and building inspection position statement shall be submitted to the department on an approved form indicating the municipality's review and approval of the proposed building design. The position statement shall be completed by the fire code official if there is no commercial building inspector for the jurisdiction.

• HARDWIRED - COMBINATION SMOKE DETECTOR AND CARBON MONOXIDE DETECTOR.

ALL THE ALARMS HAVE TO BE HARDWIRED WITH BATTERY BACKUP AND INTERCONNECTED SO THAT IF ONE GOES OFF THEY ALL GO OFF.

D	SEPT 2, 2025	DSRS REQUEST FOR INFO
C	AUG 25, 2025	DSRS REQUEST FOR INFO
B	JULY 14, 2025	FOR BUILDING PERMIT
A	JULY 7, 2025	CLIENT REVIEW & MECHANICAL REVIEW
NO.	DATE	DESCRIPTION

Kickapoo Orchard
West

52132 WI Hwy 171
Gays Mills, Wisconsin
Utica Township

NOEL MILLER, OWNER

CROSS
SECTION

36" x 24" IS THE ORIGINAL SIZE OF THIS SHEET

DRAWN BY: G.S.

CHECKED BY: G.S.

APPROVED BY: G.S.

DATE: SEPT 2, 2025

A-3

SHEET 3 OF 4

1 - CROSS SECTION LOOKING WEST
SCALE: 1/2" = 1'-0"

EVE Series

LED Exit Signs

FEATURES

Application

The EVE series is a compact architectural LED sign designed for two installations and reliable operation. The EVE Series has a flame-rated UL rated, thermoplastic housing with a highly translucent white or black finish. Available for AC or emergency operation which includes a nickel metal hydride (NiMH) battery and provides a full 90 minutes of emergency exit illumination in the event of power failure, ensuring a constant current charger. The EVE accepts 120/277VAC input at 50/60 Hz and operates 120-277VAC. Most exit signs with plug wires are optional. Available with special warranty options.

Construction

The EVE series housing and canopy are made from durable injection molded ABS thermoplastic.

Installation

EVE can be wall mounted by use of back-patch with modified-in-temperate coating and/or mounted with the use of required signage in standard 3" or 4" square or octagonal electrical boxes. Pre-wired AC input leads provided.

Illumination

The EVE series provides bright and uniform exit panel illumination for emergency egress, night or not, green LEDs with a 10 year lifetime. The panel does not exceed UL924 requirements for brightness and uniformity.

Compliance

Complies to UL924 Standard
 NFPA 70
 UL Classified Listed
 CE C22 Compliant

Warranty

EVE Full 5 year warranty
 Battery 3 years Full, 2 years pro-rata

ACCESSORIES

2-LED Indoor Emergency Light

EVC Exit Sign/ LED Emergency Light

WES Wall Mounting

WMS White Mount (White Mount)

WGS White Mount (Green Mount)

PM3W 12 W/3" Pendant Mounting Kit (white)

ORDERING GUIDE

EVE

Model	Icons	Letter Color	Finish	Duration	Self-Charge	Options
<div> <div>U</div> Universal fire </div> <div> <div>H</div> Hot Green </div> <div> <div>W</div> White LED </div> <div> <div>B</div> Backlit </div> <div> <div>AC</div> AC Only </div> <div> <div>Bk</div> Back </div> <div> <div>No Self-Charge</div> </div> <div> <div>2C</div> 2 Circuit operation </div>						
<div> <div>W</div> White fire </div> <div> <div>C</div> Cold Green </div> <div> <div>W</div> White LED </div> <div> <div>Bk</div> Backlit </div> <div> <div>AC</div> AC Only </div> <div> <div>Bk</div> Back </div> <div> <div>No Self-Charge</div> </div> <div> <div>2C</div> 2 Circuit operation </div>						
<div> <div>W</div> White fire </div> <div> <div>C</div> Cold Green </div> <div> <div>W</div> White LED </div> <div> <div>Bk</div> Backlit </div> <div> <div>AC</div> AC Only </div> <div> <div>Bk</div> Back </div> <div> <div>Self-Charge</div> </div> <div> <div>2C</div> 2 Circuit operation </div>						
<div> <div>W</div> White fire </div> <div> <div>C</div> Cold Green </div> <div> <div>W</div> White LED </div> <div> <div>Bk</div> Backlit </div> <div> <div>AC</div> AC Only </div> <div> <div>Bk</div> Back </div> <div> <div>Self-Charge</div> </div> <div> <div>2C</div> 2 Circuit operation </div>						
<div> <div>W</div> White fire </div> <div> <div>C</div> Cold Green </div> <div> <div>W</div> White LED </div> <div> <div>Bk</div> Backlit </div> <div> <div>AC</div> AC Only </div> <div> <div>Bk</div> Back </div> <div> <div>Self-Charge</div> </div> <div> <div>2C</div> 2 Circuit operation </div>						
<div> <div>W</div> White fire </div> <div> <div>C</div> Cold Green </div> <div> <div>W</div> White LED </div> <div> <div>Bk</div> Backlit </div> <div> <div>AC</div> AC Only </div> <div> <div>Bk</div> Back </div> <div> <div>Self-Charge</div> </div> <div> <div>2C</div> 2 Circuit operation </div>						
<div> <div>W</div> White fire </div> <div> <div>C</div> Cold Green </div> <div> <div>W</div> White LED </div> <div> <div>Bk</div> Backlit </div> <div> <div>AC</div> AC Only </div> <div> <div>Bk</div> Back </div> <div> <div>Self-Charge</div> </div> <div> <div>2C</div> 2 Circuit operation </div>						
<div> <div>W</div> White fire </div> <div> <div>C</div> Cold Green </div> <div> <div>W</div> White LED </div> <div> <div>Bk</div> Backlit </div> <div> <div>AC</div> AC Only </div> <div> <div>Bk</div> Back </div> <div> <div>Self-Charge</div> </div> <div> <div>2C</div> 2 Circuit operation </div>						
<div> <div>W</div> White fire </div> <div> <div>C</div> Cold Green </div> <div> <div>W</div> White LED </div> <div> <div>Bk</div> Backlit </div> <div> <div>AC</div> AC Only </div> <div> <div>Bk</div> Back </div> <div> <div>Self-Charge</div> </div> <div> <div>2C</div> 2 Circuit operation </div>						
<div> <div>W</div> White fire </div> <div> <div>C</div> Cold Green </div> <div> <div>W</div> White LED </div> <div> <div>Bk</div> Backlit </div> <div> <div>AC</div> AC Only </div> <div> <div>Bk</div> Back </div> <div> <div>Self-Charge</div> </div> <div> <div>2C</div> 2 Circuit operation </div>						
<div> <div>W</div> White fire </div> <div> <div>C</div> Cold Green </div> <div> <div>W</div> White LED </div> <div> <div>Bk</div> Backlit </div> <div> <div>AC</div> AC Only </div> <div> <div>Bk</div> Back </div> <div> <div>Self-Charge</div> </div> <div> <div>2C</div> 2 Circuit operation </div>						
<div> <div>W</div> White fire </div> <div> <div>C</div> Cold Green </div> <div> <div>W</div> White LED </div> <div> <div>Bk</div> Backlit </div> <div> <div>AC</div> AC Only </div> <div> <div>Bk</div> Back </div> <div> <div>Self-Charge</div> </div> <div> <div>2C</div> 2 Circuit operation </div>						
<div> <div>W</div> White fire </div> <div> <div>C</div> Cold Green </div> <div> <div>W</div> White LED </div> <div> <div>Bk</div> Backlit </div> <div> <div>AC</div> AC Only </div> <div> <div>Bk</div> Back </div> <div> <div>Self-Charge</div> </div> <div> <div>2C</div> 2 Circuit operation </div>						
<div> <div>W</div> White fire </div> <div> <div>C</div> Cold Green </div> <div> <div>W</div> White LED </div> <div> <div>Bk</div> Backlit </div> <div> <div>AC</div> AC Only </div> <div> <div>Bk</div> Back </div> <div> <div>Self-Charge</div> </div> <div> <div>2C</div> 2 Circuit operation </div>						
<div> <div>W</div> White fire </div> <div> <div>C</div> Cold Green </div> <div> <div>W</div> White LED </div> <div> <div>Bk</div> Backlit </div> <div> <div>AC</div> AC Only </div> <div> <div>Bk</div> Back </div> <div> <div>Self-Charge</div> </div> <div> <div>2C</div> 2 Circuit operation </div>						
<div> <div>W</div> White fire </div> <div> <div>C</div> Cold Green </div> <div> <div>W</div> White LED </div> <div> <div>Bk</div> Backlit </div> <div> <div>AC</div> AC Only </div> <div> <div>Bk</div> Back </div> <div> <div>Self-Charge</div> </div> <div> <div>2C</div> 2 Circuit operation </div>						
<div> <div>W</div> White fire </div> <div> <div>C</div> Cold Green </div> <div> <div>W</div> White LED </div> <div> <div>Bk</div> Backlit </div> <div> <div>AC</div> AC Only </div> <div> <div>Bk</div> Back </div> <div> <div>Self-Charge</div> </div> <div> <div>2C</div> 2 Circuit operation </div>						
<div> <div>W</div> White fire </div> <div> <div>C</div> Cold Green </div> <div> <div>W</div> White LED </div> <div> <div>Bk</div> Backlit </div> <div> <div>AC</div> AC Only </div> <div> <div>Bk</div> Back </div> <div> <div>Self-Charge</div> </div> <div> <div>2C</div> 2 Circuit operation </div>						
<div> <div>W</div> White fire </div> <div> <div>C</div> Cold Green </div> <div> <div>W</div> White LED </div> <div> <div>Bk</div> Backlit </div> <div> <div>AC</div> AC Only </div> <div> <div>Bk</div> Back </div> <div> <div>Self-Charge</div> </div> <div> <div>2C</div> 2 Circuit operation </div>						
<div> <div>W</div> White fire </div> <div> <div>C</div> Cold Green </div> <div> <div>W</div> White LED </div> <div> <div>Bk</div> Backlit </div> <div> <div>AC</div> AC Only </div> <div> <div>Bk</div> Back </div> <div> <div>Self-Charge</div> </div> <div> <div>2C</div> 2 Circuit operation </div>						
<div> <div>W</div> White fire </div> <div> <div>C</div> Cold Green </div> <div> <div>W</div> White LED </div> <div> <div>Bk</div> Backlit </div> <div> <div>AC</div> AC Only </div> <div> <div>Bk</div> Back </div> <div> <div>Self-Charge</div> </div> <div> <div>2C</div> 2 Circuit operation </div>						
<div> <div>W</div> White fire </div> <div> <div>C</div> Cold Green </div> <div> <div>W</div> White LED </div> <div> <div>Bk</div> Backlit </div> <div> <div>AC</div> AC Only </div> <div> <div>Bk</div> Back </div> <div> <div>Self-Charge</div> </div> <div> <div>2C</div> 2 Circuit operation </div>						
<div> <div>W</div> White fire </div> <div> <div>C</div> Cold Green </div> <div> <div>W</div> White LED </div> <div> <div>Bk</div> Backlit </div>						

TWR1 LED Wall Luminaire

Model
Series
Size

Specifications

Width: 12-1/2" (318 mm)

Height: 6-1/2" (165 mm)

Depth: 2-1/2" (64 mm)

Weight: 11 lbs (5 kg)

Introduction

The popular TWR1 luminaire is now available with long-lasting, energy-efficient LED technology. Featuring a classic chafarm, the TWR1 LED offers the same timeless elegance and is powered by advanced LEDs.

The TWR1 LED luminaire is powerful yet energy efficient, capable of replacing up to a 30W watt halide luminaire while saving up to 80% in energy costs. Offering an expected service life more than 20 years, the TWR1 LED eliminates frequent lamp and ballast replacements associated with traditional technologies.

Ordering Information

EXAMPLE: TWR1 LED PZ50 MVOLT DDBT30

TWR1 LED

Series	Performance Rating	Color Temp / ssa	Watts	Output	Options	Dimm	Notes
TWR1 LED	1.0 L70 (9000 hrs) 2.0 L80 (15,000 hrs) 3.0 L90 (25,000 hrs)	40K 0.058° 50K 0.064° 50K 0.034°	50W 40W 30W	3000K 3400K 3600K	10-160V 120-277V 120-277V	0-10V DALI 0-10V	Standard 0-10V 0-10V

NOTES:

1. Controlled color temperature (CCT) showing warmest and coolest CCTs available.
2. 0-10V dimmer compatible with the following DALI (0-10V) DALI.

FEATURES & SPECIFICATIONS

STANDARD LED

Standard LED luminaire includes standard LED design with high-output LED technology and integrated LED driver. LED luminaire includes standard LED design with high-output LED technology and integrated LED driver. LED luminaire includes standard LED design with high-output LED technology and integrated LED driver. LED luminaire includes standard LED design with high-output LED technology and integrated LED driver.

CONSTRUCTION

The luminaire is constructed from a combination of materials including aluminum, steel, and plastic. The luminaire is constructed from a combination of materials including aluminum, steel, and plastic. The luminaire is constructed from a combination of materials including aluminum, steel, and plastic. The luminaire is constructed from a combination of materials including aluminum, steel, and plastic.

OPTIONS

The luminaire is available in a variety of options including different color temperatures, output levels, and dimming options. The luminaire is available in a variety of options including different color temperatures, output levels, and dimming options. The luminaire is available in a variety of options including different color temperatures, output levels, and dimming options.

INSTALLATION

The luminaire is designed for easy installation. The luminaire is designed for easy installation. The luminaire is designed for easy installation. The luminaire is designed for easy installation. The luminaire is designed for easy installation.

MAINTENANCE

The luminaire is designed for easy maintenance. The luminaire is designed for easy maintenance. The luminaire is designed for easy maintenance. The luminaire is designed for easy maintenance. The luminaire is designed for easy maintenance.

WARRANTY

The luminaire is covered by a limited warranty. The luminaire is covered by a limited warranty. The luminaire is covered by a limited warranty. The luminaire is covered by a limited warranty. The luminaire is covered by a limited warranty.

One Lithonia Way • Gwynn, Georgia 30041 • Phone: 800-278-3841 • www.lithonia.com
© 2015 Lithonia Lighting. All rights reserved.

FIRE SAFETY:

1. The occupant load shall be displayed in accordance with IBC section 1004.3.

2. All open flames, including smoking, shall be prohibited in the building and within 50 feet or less from the building, except for flame equipment used to reheat or maintain food temperatures.

3. A smoke detection and fire alarm system shall be installed in accordance with IBC section 907.

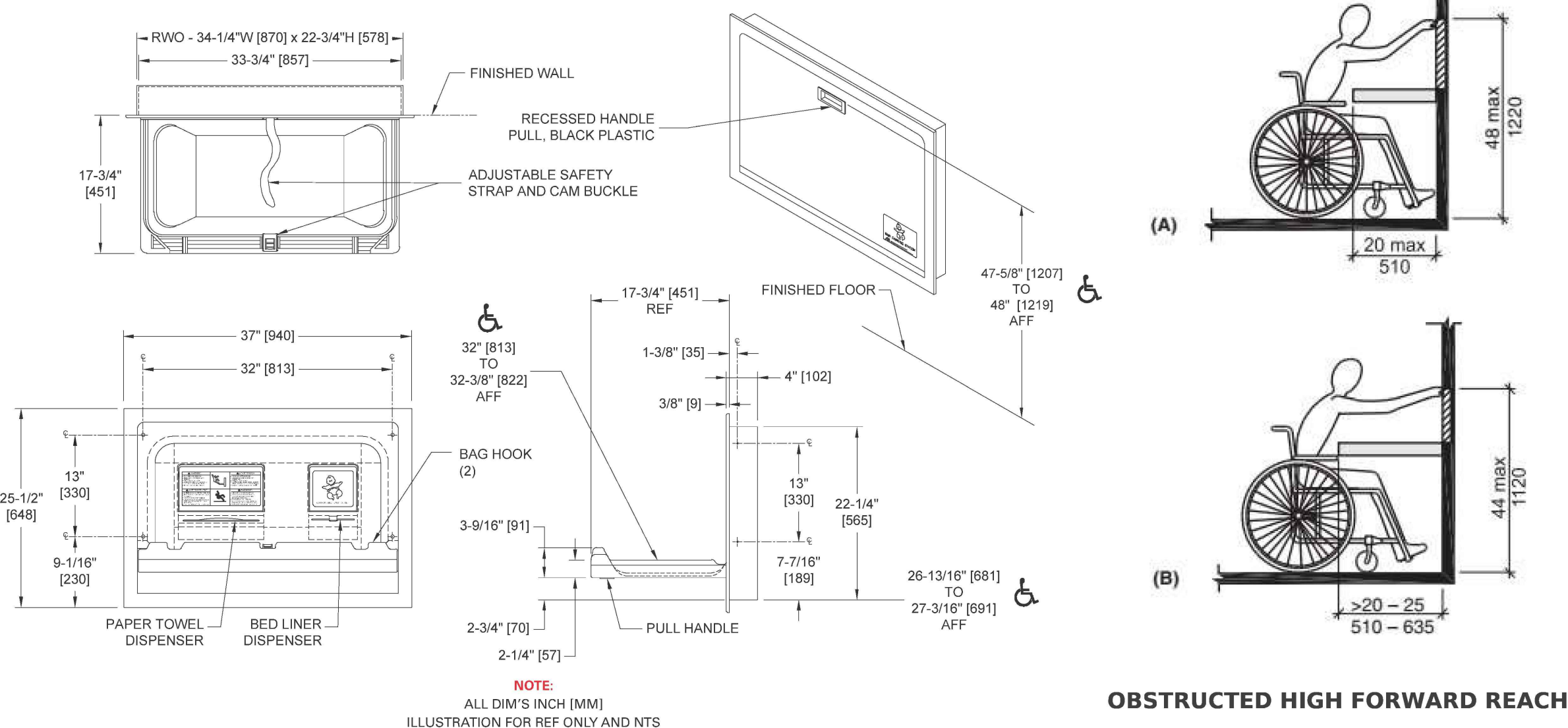
4. Portable fire extinguishers shall be installed in accordance with IBC section 906.

5. A municipal fire and building inspection position statement shall be submitted to the department on an approved form indicating the municipality's review and approval of the proposed building design. The position statement shall be completed by the fire code official if there is no commercial building inspector for the jurisdiction.

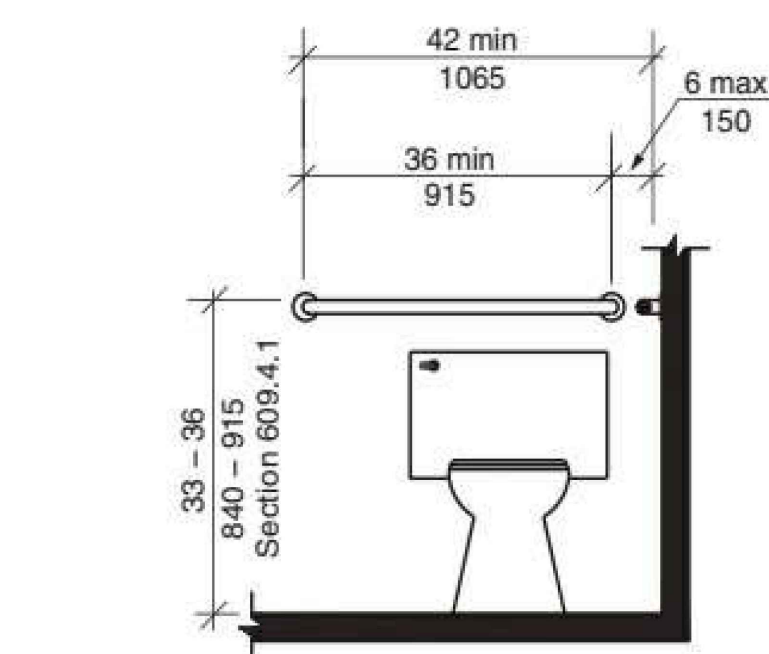
- **HARDWIRED – COMBINATION SMOKE DETECTOR AND CARBON MONOXIDE DETECTOR.**

ALL THE ALARMS HAVE TO BE HARDWIRED WITH BATTERY BACKUP AND INTERCONNECTED SO THAT IF ONE GOES OFF THEY ALL GO OFF.

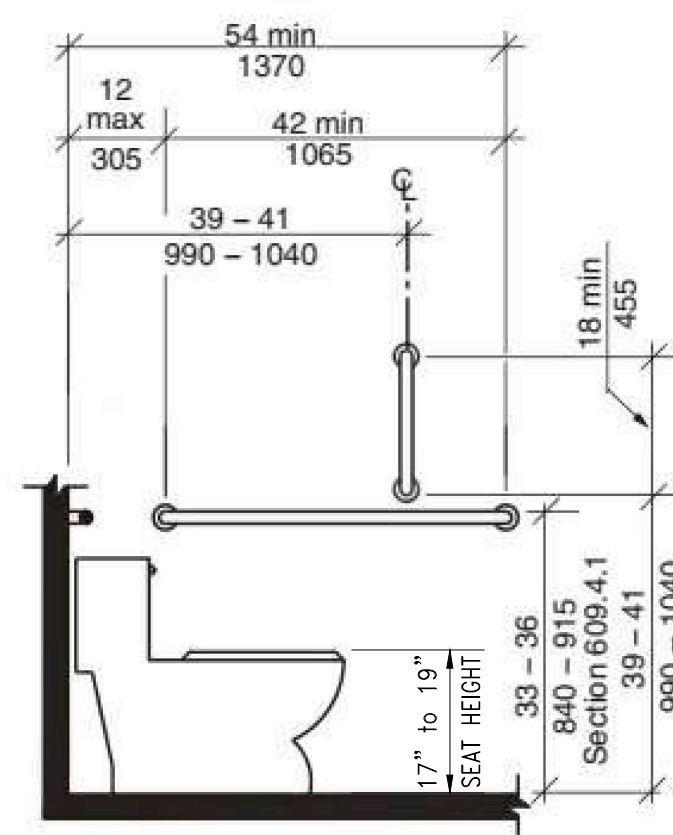
SCALE: NOT TO SCALE



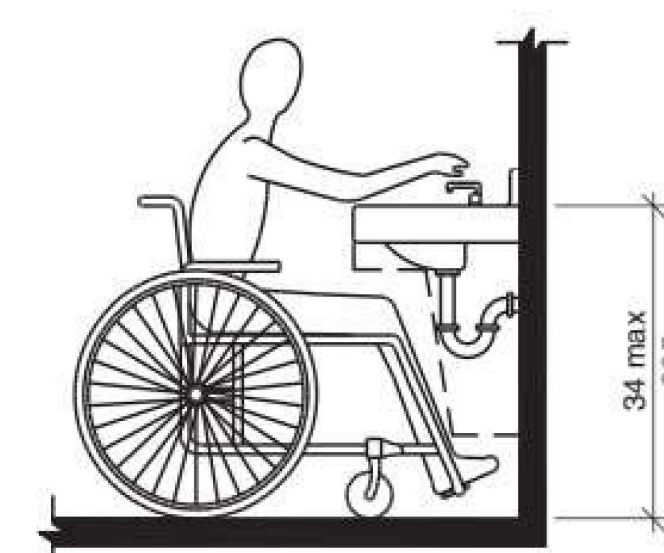
SCALE: NOT TO SCALE



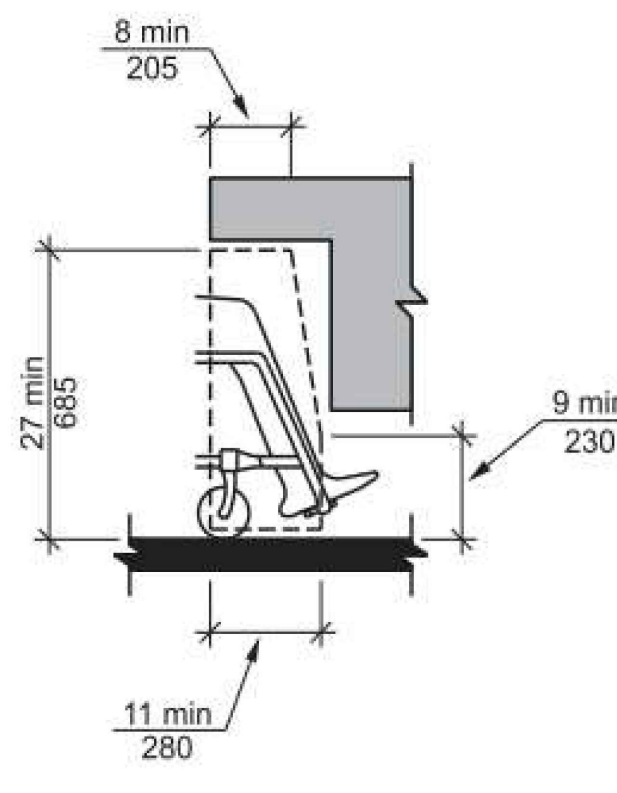
REAR-WALL GRAB BAR FOR WATER CLOSET



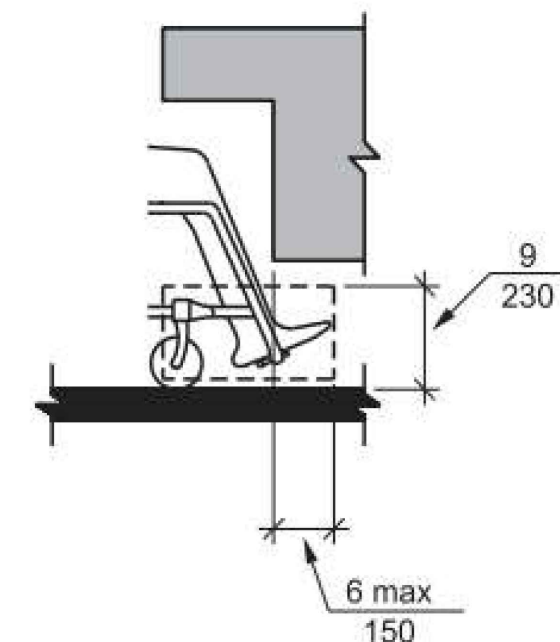
SIDE-WALL GRAB BAR FOR WATER CLOSET



HEIGHT OF LAVATORIES AND SINKS

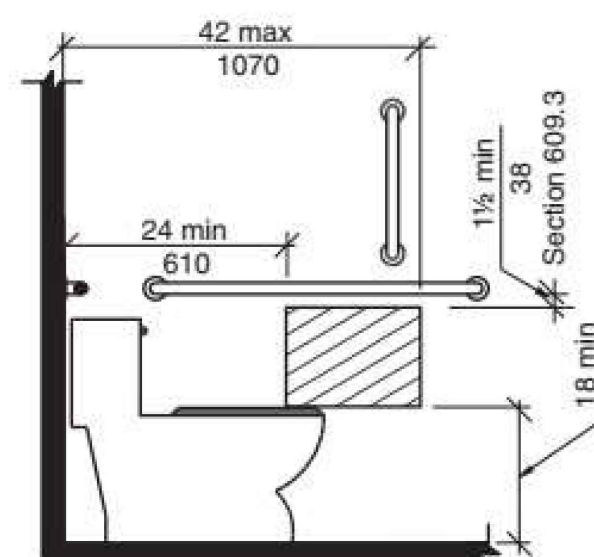


KNEE CLEARANCE - ELEVATION

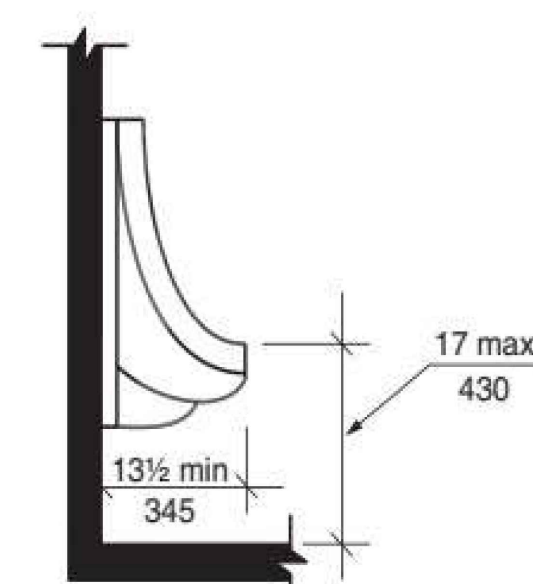


TOE CLEARANCE - ELEVATION

SCALE: NOT TO SCALE



DISPENSER OUTLET LOCATION - PROTRUDING DISPENSER BELOW GRAB BAR



HEIGHT AND DEPTH OF URINAL WALL HUNG TYPE

SCALE: NOT TO SCALE

SCALE: NOT TO SCALE

SCALE: NOT TO SCALE